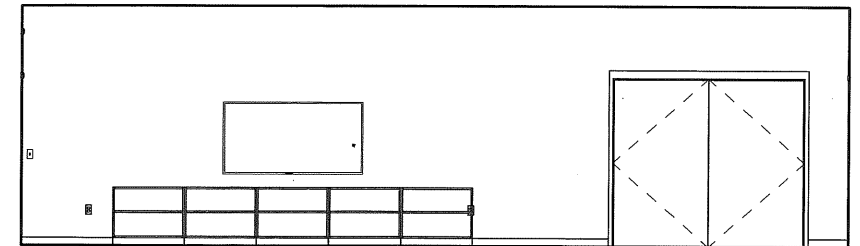
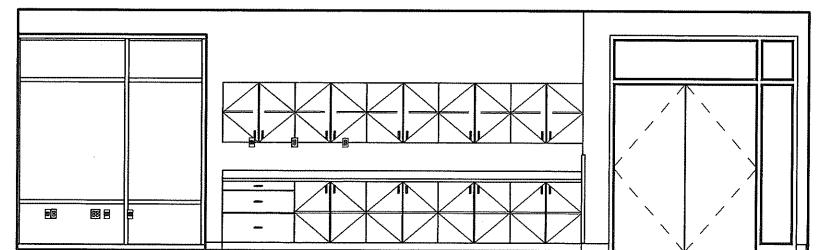


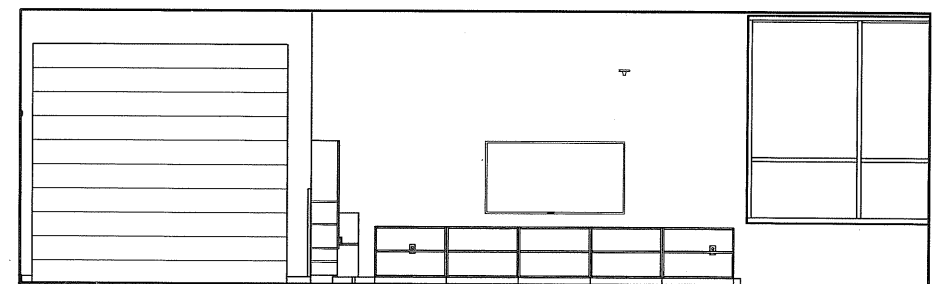
5 - DRAMA CLASSROOM #220 - D
1/8" = 1'-0"



4 - DRAMA CLASSROOM #220 - C
1/8" = 1'-0"



3 - DRAMA CLASSROOM #220 - B
1/8" = 1'-0"



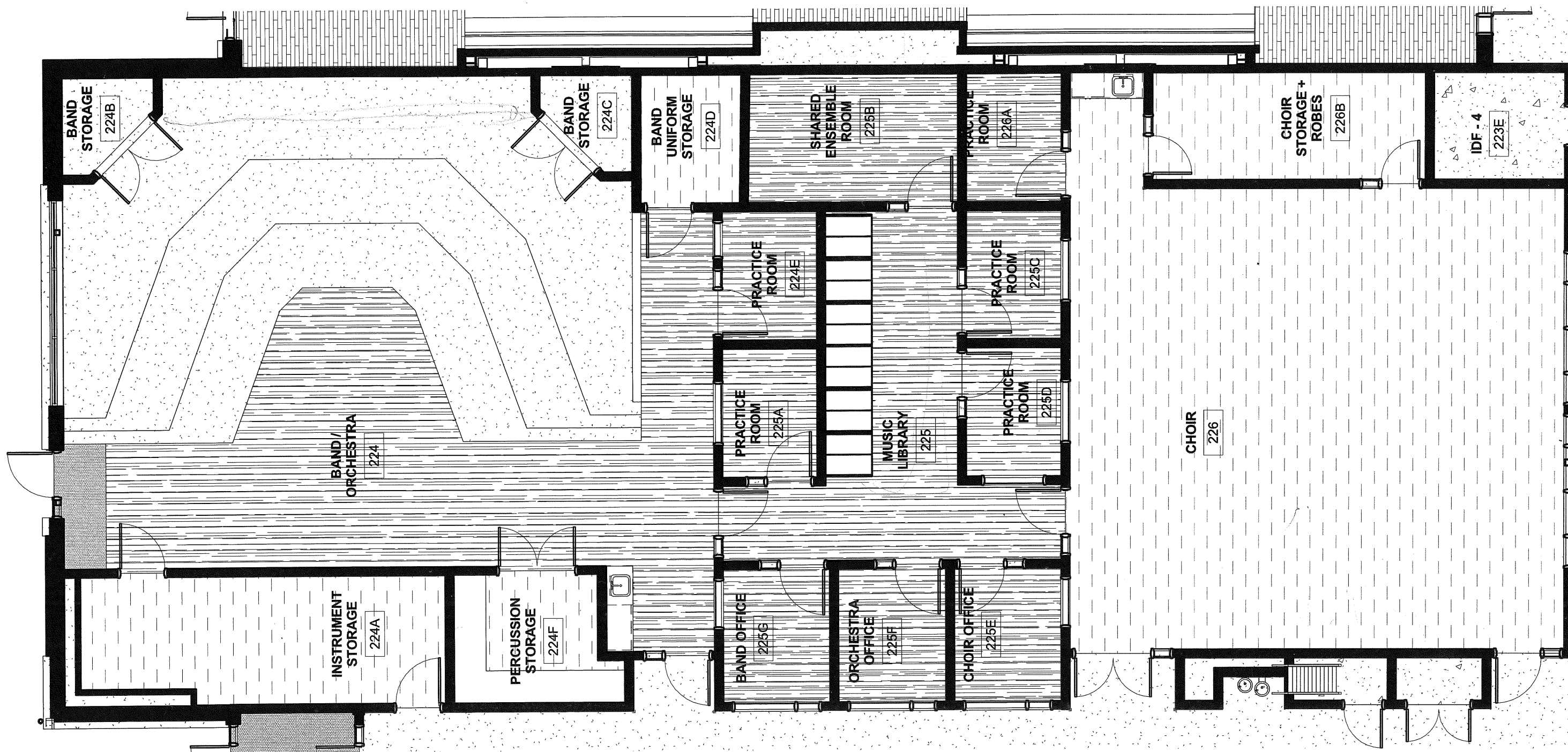
2 - DRAMA CLASSROOM #220 - A
1/8" = 1'-0"

**FG -1 PERFORMING ARTS - PLAN
AND INTERIOR ELEVATIONS**



architecture
interior design
visual marketing

tel: 425.259.3161
1716 West Marine View Dr.
Everett, WA 98201-2098
www.dykeman.net



FG-2 PERFORMING ARTS - PLAN

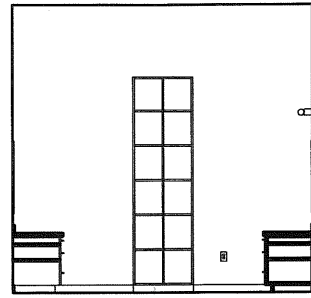



**Bellingham
Public Schools**
a collective commitment

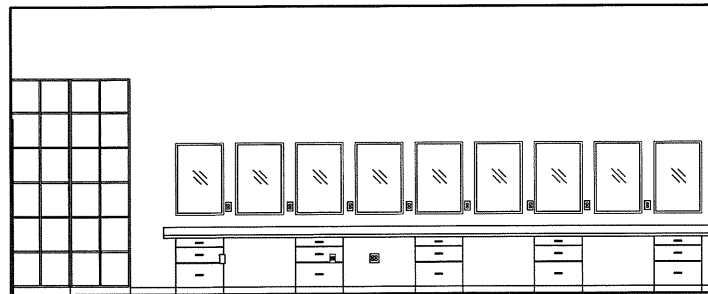
DYKEMAN
 INSPIRING EVERYDAY SPACES

*architecture
interior design
visual marketing*

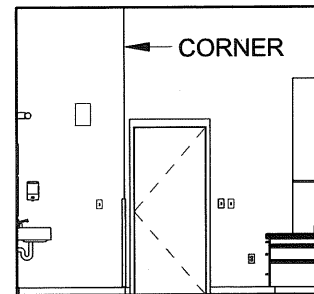
tel: 425.259.3161
 1716 West Marine View Dr.
 Everett, WA 98201-2098
www.dykeman.net



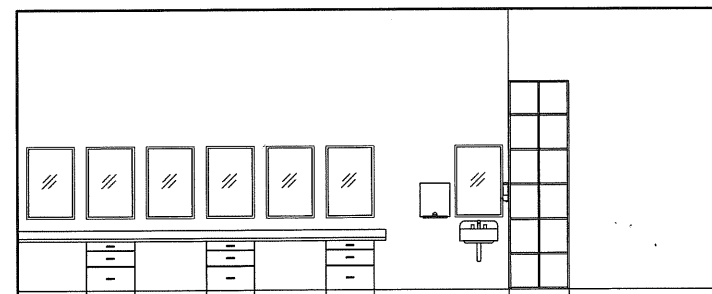
4 - DRESSING ROOM #214 - D
1/8" = 1'-0"



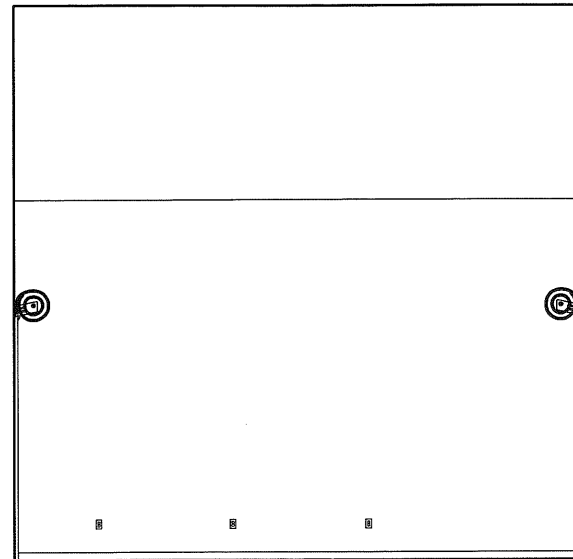
3 - DRESSING ROOM #214 - C
1/8" = 1'-0"



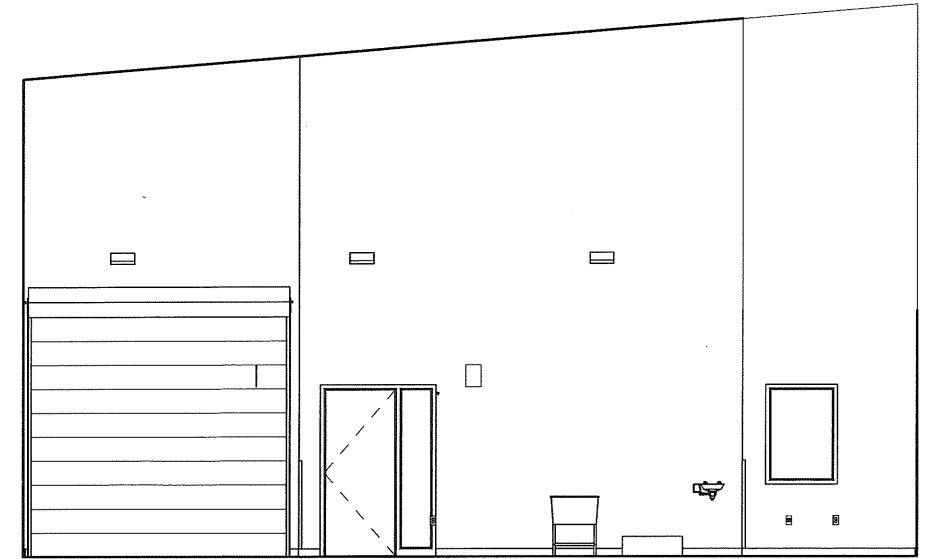
2 - DRESSING ROOM #214 - B
1/8" = 1'-0"



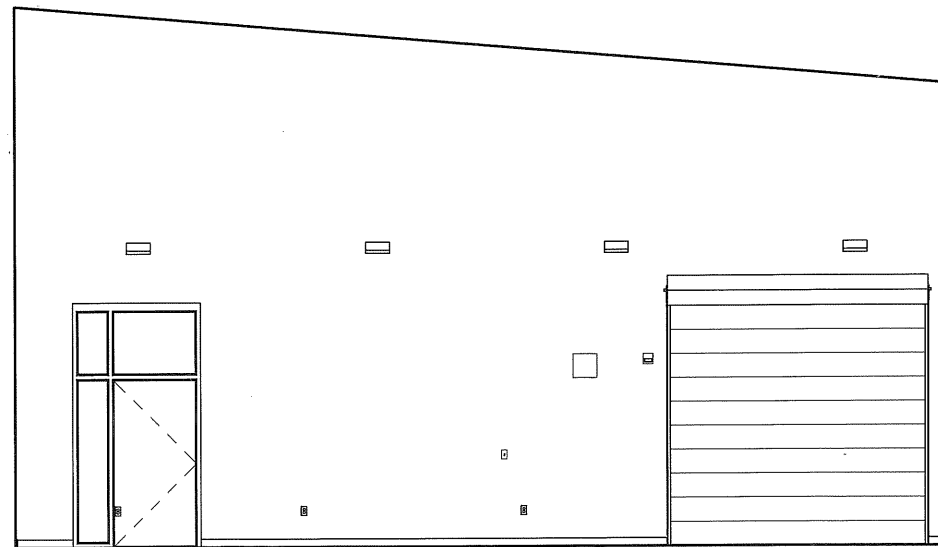
1 - DRESSING ROOM #214 - A
1/8" = 1'-0"



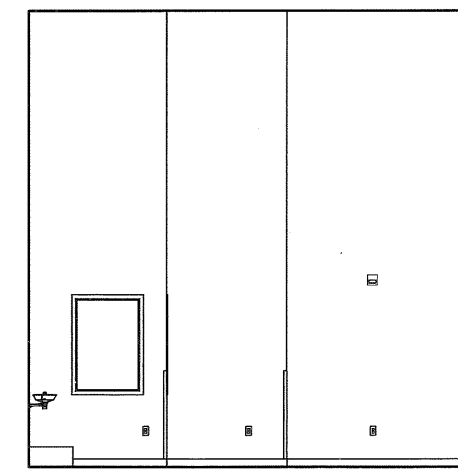
6 - SCENE ASMBY. #218 - B
1/8" = 1'-0"



8 - SCENE ASMBY. #218 - C
1/8" = 1'-0"



5 - SCENE ASMBY. #218 - A
1/8" = 1'-0"



7 - SCENE ASMBY. #218 - D
1/8" = 1'-0"