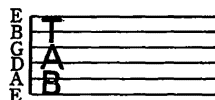


Tablature

The guitar tablature provided here is a substitute for (or a supplement to) the standard musical notation. The six lines represent the six strings of the guitar, with the bass E as the bottom line.



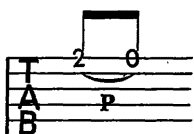
The number on the line is the fret at which the left hand finger stops the string. Thus, a C chord would be shown as:



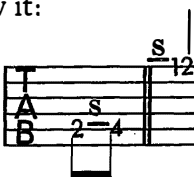
Two notes tied together with the letter *H* in between indicates a *hammeron*:



P is a *pulloff* (left-hand pluck):



S is a *slide* from one fret to another, or to a fret from an optional point below it:



∞ indicates a *bend*, or *choke*, produced by stretching the string with the finger that is fretting it, thus raising the note and making a whining, blue-note effect. A note can be raised a half-step or more this way.

Occasionally it is necessary to notate which right hand finger plucks a string, and these are designated by the letters *T* (thumb), *I* (index), *M* (middle) and *R* (ring).