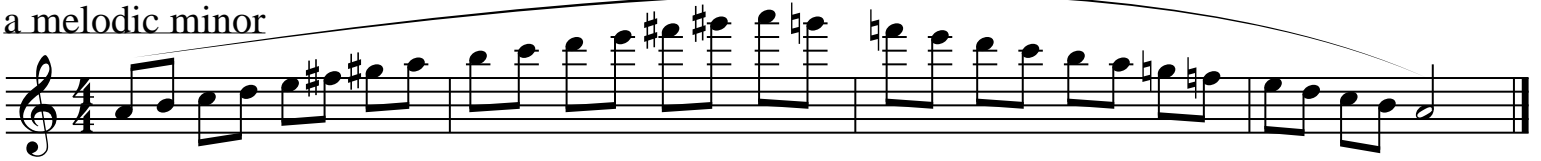


Flute Major and minor scales

C Major



a melodic minor



F Major



d melodic minor



G Major



e melodic minor



Bb Major



g melodic minor



D Major



b melodic minor



Clarinet Major and minor scales

C Major



a melodic minor



E Major



d melodic minor



G Major



e melodic minor



Bb Major



g melodic minor



D Major



b melodic minor



Oboe Major and minor scales

C Major



a melodic minor



F Major



d melodic minor



G Major



e melodic minor



Bb Major



g melodic minor



D Major



b melodic minor



Bassoon Major and minor scales

C Major



a melodic minor



F Major



d melodic minor



G Major



e melodic minor



Bb Major



g melodic minor



D Major



b melodic minor



E \flat Major



c melodic minor



A \flat Major



f melodic minor



D \flat Major



b \flat melodic minor



G \flat Major



e \flat melodic minor



Bass and Contrabass Clarinet Major and minor scales

C Major



a melodic minor



F Major



d melodic minor



G Major



e melodic minor



Bb Major



g melodic minor



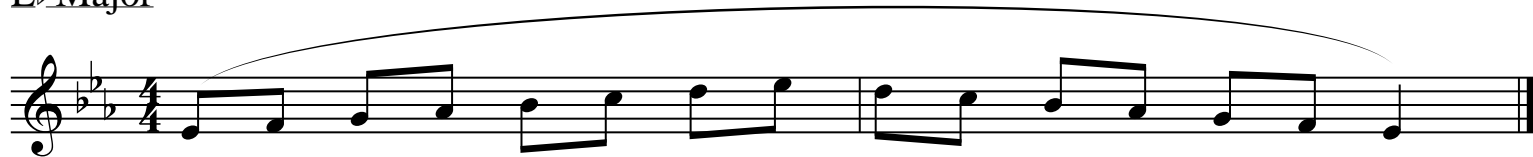
D Major



b melodic minor



E \flat Major



c melodic minor



A Major



f# melodic minor



A \flat Major



f melodic minor



E Major



c# melodic minor



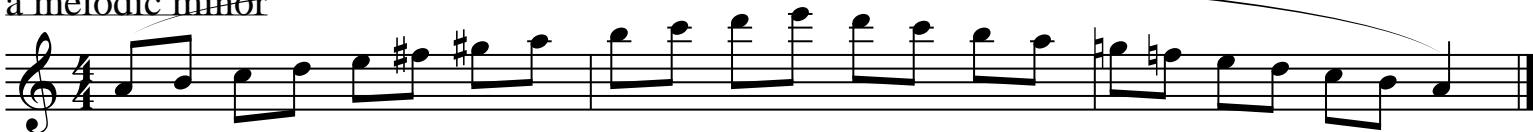
Alto and Baritone Saxophone Major and minor scales

To be played at a minimum of ♩ = 144

C Major



a melodic minor



F Major



d melodic minor



G Major



e melodic minor



B♭ Major



g melodic minor



D Major



b melodic minor



Tenor Saxophone Major and minor scales

C Major



a melodic minor



F Major



d melodic minor



G Major



e melodic minor



Bb Major



g melodic minor



D Major



b melodic minor



Trumpet/Euphonium TC Major and minor scales

C Major



a melodic minor



F Major



d melodic minor



G Major



e melodic minor



Bb Major



g melodic minor



D Major



b melodic minor



E \flat Major



c melodic minor



A Major



A \sharp melodic minor



A \flat Major



f melodic minor



E Major



c \sharp melodic minor



Trombone and String Bass Major and minor scales

C Major



a melodic minor



F Major



d melodic minor



G Major



e melodic minor



Bb Major



g melodic minor



D Major



b melodic minor



E \flat Major

Musical notation for the E \flat Major scale in bass clef, 4/4 time. The scale is written in a single line with a slur over the first seven measures, ending with a whole note in the eighth measure.

c melodic minor

Musical notation for the C melodic minor scale in bass clef, 4/4 time. The scale is written in a single line with a slur over the first seven measures, ending with a whole note in the eighth measure.

A \flat Major

Musical notation for the A \flat Major scale in bass clef, 4/4 time. The scale is written in a single line with a slur over the first seven measures, ending with a whole note in the eighth measure.

f melodic minor

Musical notation for the F melodic minor scale in bass clef, 4/4 time. The scale is written in a single line with a slur over the first seven measures, ending with a whole note in the eighth measure.

D \flat Major

Musical notation for the D \flat Major scale in bass clef, 4/4 time. The scale is written in a single line with a slur over the first seven measures, ending with a whole note in the eighth measure.

b \flat melodic minor

Musical notation for the B \flat melodic minor scale in bass clef, 4/4 time. The scale is written in a single line with a slur over the first seven measures, ending with a whole note in the eighth measure.

G \flat Major

Musical notation for the G \flat Major scale in bass clef, 4/4 time. The scale is written in a single line with a slur over the first seven measures, ending with a whole note in the eighth measure.

e \flat melodic minor

Musical notation for the E \flat melodic minor scale in bass clef, 4/4 time. The scale is written in a single line with a slur over the first seven measures, ending with a whole note in the eighth measure.

Bass Trombone Major and minor scales

C Major



a melodic minor



F Major



d melodic minor



G Major



e melodic minor



Bb Major



g melodic minor



D Major



b melodic minor



Euphonium BC Major and minor scales

C Major



a melodic minor



F Major



d melodic minor



G Major



e melodic minor



Bb Major



g melodic minor



D Major



b melodic minor



French Horn Major and minor scales

C Major



a melodic minor



F Major



d melodic minor



G Major



e melodic minor



Bb Major



g melodic minor



D Major



b melodic minor



E \flat Major



c melodic minor



A Major



f \sharp melodic minor



A \flat Major



f melodic minor



D \flat Major



b \flat melodic minor



Tuba Major and minor scales

C Major



a melodic minor



F Major



d melodic minor



G Major



e melodic minor



Bb Major



g melodic minor



D Major



b melodic minor



E \flat Major



c melodic minor



A \flat Major



f melodic minor



D \flat Major



b \flat melodic minor



G \flat Major



e \flat melodic minor



Keyboard Mallet Major and minor scales

C Major



a melodic minor



F Major



d melodic minor



G Major



e melodic minor



Bb Major



g melodic minor



D Major



b melodic minor



Play each Rudiment open (slow) to closed (fast) to open (slow).
 If more than one sticking pattern is shown, either may be used.

1. Long Roll (Double Stroke Open Roll)

2. Five Stroke Roll

3. Seven Stroke Roll

4. The Flam

5. The Flam Accent

6. The Flam Paradiddle

7. The Flamacue

8. The Ruff (Drag)

9. The Single Drag (Single Drag Tap)

10. The Double Drag (Double Drag Tap)

11. The Double Paradiddle

12. The Single Ratamacue

13. The Triple Ratamacue

The image displays 13 musical staves, each representing a different drum rudiment. Each staff includes a rhythmic notation with notes and rests, and a corresponding sticking pattern (L for left hand, R for right hand) written below the notes. The rudiments are: 1. Long Roll (Double Stroke Open Roll), 2. Five Stroke Roll, 3. Seven Stroke Roll, 4. The Flam, 5. The Flam Accent, 6. The Flam Paradiddle, 7. The Flamacue, 8. The Ruff (Drag), 9. The Single Drag (Single Drag Tap), 10. The Double Drag (Double Drag Tap), 11. The Double Paradiddle, 12. The Single Ratamacue, and 13. The Triple Ratamacue. Some rudiments have multiple sticking patterns shown, indicating they can be played either way. The notation includes various note values, rests, and dynamic markings like accents (>) and slurs.

14. The Single Stroke Roll

Musical notation for 'The Single Stroke Roll' showing a sequence of eighth notes with alternating L and R strokes. The first four notes are L R L R, followed by a roll of eight notes (L R L R L R L R), and a final roll of eight notes (R L R L R L R L).

15. The Nine Stroke Roll

Musical notation for 'The Nine Stroke Roll' showing a sequence of eighth notes with alternating L and R strokes. The first four notes are L L R R L L R R L, followed by a roll of eight notes (R R L L R R L L R), and a final roll of four notes (L L R R).

16. The Ten Stroke Roll

Musical notation for 'The Ten Stroke Roll' showing a sequence of eighth notes with alternating L and R strokes. The first four notes are L L R R L L R R L R, followed by a roll of eight notes (L L R R L L R R L R), and a final roll of four notes (L L R R).

17. The Eleven Stroke Roll

Musical notation for 'The Eleven Stroke Roll' showing a sequence of eighth notes with alternating L and R strokes. The first four notes are L L R R L L R R L L R, followed by a roll of eight notes (L L R R L L R R L L R), and a final roll of four notes (L L R R).

18. The Thirteen Stroke Roll

Musical notation for 'The Thirteen Stroke Roll' showing a sequence of eighth notes with alternating L and R strokes. The first four notes are L L R R L L R R L L R R L, followed by a roll of eight notes (R R L L R R L L R R L L R), and a final roll of four notes (L L R R).

19. The Fifteen Stroke Roll

Musical notation for 'The Fifteen Stroke Roll' showing a sequence of eighth notes with alternating L and R strokes. The first four notes are L L R R L L R R L L R R L L R, followed by a roll of eight notes (L L R R L L R R L L R R L L R), and a final roll of four notes (L L R R).

20. The Flam Tap

Musical notation for 'The Flam Tap' showing a sequence of eighth notes with alternating L and R strokes. The first four notes are L R R L L R R, followed by a roll of eight notes (L R R L L R R L L R R), and a final roll of four notes (L R R L).

21. Single Paradiddle

Musical notation for 'Single Paradiddle' showing a sequence of eighth notes with alternating L and R strokes. The first four notes are L R L L R R L L, followed by a roll of eight notes (L R L L R R L L R R L L), and a final roll of four notes (L R L L).

22. The Drag Paradiddle No. 1

Musical notation for 'The Drag Paradiddle No. 1' showing a sequence of eighth notes with alternating L and R strokes. The first four notes are L L R R L L R R L L, followed by a roll of eight notes (L L R R L L R R L L R R L L), and a final roll of four notes (L L R R).

23. The Drag Paradiddle No. 2

Musical notation for 'The Drag Paradiddle No. 2' showing a sequence of eighth notes with alternating L and R strokes. The first four notes are L L R R L L R R L L, followed by a roll of eight notes (L L R R L L R R L L R R L L), and a final roll of four notes (L L R R).

24. The Flam Paradiddle-Diddle

Musical notation for 'The Flam Paradiddle-Diddle' showing a sequence of eighth notes with alternating L and R strokes. The first four notes are L R L R L L R R L L, followed by a roll of eight notes (L R L R L L R R L L R R L L), and a final roll of four notes (L R L R).

25. Lesson 25 (Ratatap)

Musical notation for 'Lesson 25 (Ratatap)' showing a sequence of eighth notes with alternating L and R strokes. The first four notes are L L R L R L, followed by a roll of eight notes (L L R L R L R R L R L), and a final roll of four notes (L L R L).

26. The Double Ratamacue

Musical notation for 'The Double Ratamacue' showing a sequence of eighth notes with alternating L and R strokes. The first four notes are L L R L L R L L, followed by a roll of eight notes (L L R L L R L L R R L L R R L L), and a final roll of four notes (L L R L).

Flute Chromatic Scale

To be played from memory at a minimum tempo of ♩ = 176.
Chromatic fingerings should be used where appropriate.

The Flute Chromatic Scale is presented in three staves of music. The first staff shows the ascending scale from C4 to C5. The second staff shows the descending scale from C5 to C4. The third staff shows the descending scale from C4 to C3. The music is written in treble clef with a 4/4 time signature. A large slur covers the entire piece. The notes are: C4, C#4, D4, D#4, E4, E#4, F4, F#4, G4, G#4, A4, A#4, B4, B#4, C5, B4, B#4, A4, A#4, G4, G#4, F4, F#4, E4, E#4, D4, D#4, C4, B3, B#3, A3, A#3, G3, G#3, F3, F#3, E3, E#3, D3, D#3, C3.

Oboe Chromatic Scale

To be played from memory at a minimum tempo of ♩ = 176.
Chromatic fingerings should be used where appropriate.

The Oboe Chromatic Scale is presented in two staves of music. The first staff shows the ascending scale from C4 to C5. The second staff shows the descending scale from C5 to C4. The music is written in treble clef with a 4/4 time signature. A large slur covers the entire piece. The notes are: C4, C#4, D4, D#4, E4, E#4, F4, F#4, G4, G#4, A4, A#4, B4, B#4, C5, B4, B#4, A4, A#4, G4, G#4, F4, F#4, E4, E#4, D4, D#4, C4, B3, B#3, A3, A#3, G3, G#3, F3, F#3, E3, E#3, D3, D#3, C3.

Bassoon Chromatic Scale

To be played from memory at a minimum tempo of ♩ = 152.
Chromatic fingerings should be used where appropriate.

The Bassoon Chromatic Scale is presented in two staves of music. The first staff shows the ascending scale from C3 to C4. The second staff shows the descending scale from C4 to C3. The music is written in bass clef with a 4/4 time signature. A large slur covers the entire piece. The notes are: C3, C#3, D3, D#3, E3, E#3, F3, F#3, G3, G#3, A3, A#3, B3, B#3, C4, B3, B#3, A3, A#3, G3, G#3, F3, F#3, E3, E#3, D3, D#3, C3, B2, B#2, A2, A#2, G2, G#2, F2, F#2, E2, E#2, D2, D#2, C2.

Clarinet Chromatic Scale

To be played from memory at a minimum tempo of ♩ = 176.
Chromatic fingerings should be used where appropriate.

Musical notation for the Clarinet Chromatic Scale, consisting of two staves. The first staff shows the ascending scale from middle C (C4) to G5. The second staff shows the descending scale from G5 to C4. The key signature is one sharp (F#), and the time signature is 4/4. The notes are: C4, C#4, D4, D#4, E4, E#4, F4, F#4, G4, G#4, A4, A#4, B4, B#4, C5, C#5, D5, D#5, E5, E#5, F5, F#5, G5.

Bass Clarinet Chromatic Scale

To be played from memory at a minimum tempo of ♩ = 152.
Chromatic fingerings should be used where appropriate.

Musical notation for the Bass Clarinet Chromatic Scale, consisting of two staves. The first staff shows the ascending scale from middle C (C4) to G5. The second staff shows the descending scale from G5 to C4. The key signature is one flat (Bb), and the time signature is 4/4. The notes are: C4, C#4, D4, D#4, E4, E#4, F4, F#4, G4, G#4, A4, A#4, B4, B#4, C5, C#5, D5, D#5, E5, E#5, F5, F#5, G5.

Contrabass Clarinet Chromatic Scale

To be played from memory at a minimum tempo of ♩ = 152.
Chromatic fingerings should be used where appropriate.

Musical notation for the Contrabass Clarinet Chromatic Scale, consisting of two staves. The first staff shows the ascending scale from middle C (C4) to G5. The second staff shows the descending scale from G5 to C4. The key signature is one flat (Bb), and the time signature is 4/4. The notes are: C4, C#4, D4, D#4, E4, E#4, F4, F#4, G4, G#4, A4, A#4, B4, B#4, C5, C#5, D5, D#5, E5, E#5, F5, F#5, G5.

SD All State Band Auditions

Revised 2008

Alto, Tenor and Baritone Saxophone Chromatic Scale

To be played from memory at a minimum tempo of $\text{♩} = 176$.
Chromatic fingerings should be used where appropriate.

Two staves of musical notation for the Alto, Tenor, and Baritone Saxophone Chromatic Scale. The first staff shows the ascending scale in 4/4 time, and the second staff shows the descending scale. The key signature is one flat (B-flat major/C minor).

Trumpet and Euphonium TC Chromatic Scale

To be played from memory at a minimum tempo of $\text{♩} = 76$.

Two staves of musical notation for the Trumpet and Euphonium TC Chromatic Scale. The first staff shows the ascending scale in 6/8 time, and the second staff shows the descending scale. The key signature is one flat (B-flat major/C minor).

French Horn Chromatic Scale

To be played from memory at a minimum tempo of $\text{♩} = 76$.

Two staves of musical notation for the French Horn Chromatic Scale. The first staff shows the ascending scale in 6/8 time, and the second staff shows the descending scale. The key signature is one flat (B-flat major/C minor).

Trombone and String Bass Chromatic Scale

To be played from memory at a minimum tempo of $\text{♩} = 76$.

Two staves of musical notation for the Trombone and String Bass Chromatic Scale. The first staff shows the ascending scale in 6/8 time, and the second staff shows the descending scale. The key signature is one flat (B-flat major/C minor).

Bass Trombone Chromatic Scale

To be played from memory at a minimum tempo of ♩. = 76.

Two staves of musical notation for the Bass Trombone Chromatic Scale. The first staff shows the ascending scale from B1 to B2, and the second staff shows the descending scale from B2 to B1. The key signature has one flat (Bb) and the time signature is 6/8. The notes are: B1, Bb1, B1, B#1, B1, B2, Bb2, B2, B#2, B2, B3, Bb3, B3, B#3, B3, B4, Bb4, B4, B#4, B4, B5, Bb5, B5, B#5, B5, B6.

Euphonium BC Chromatic Scale

To be played from memory at a minimum tempo of ♩. = 76.

Two staves of musical notation for the Euphonium BC Chromatic Scale. The first staff shows the ascending scale from B1 to B2, and the second staff shows the descending scale from B2 to B1. The key signature has one flat (Bb) and the time signature is 6/8. The notes are: B1, Bb1, B1, B#1, B1, B2, Bb2, B2, B#2, B2, B3, Bb3, B3, B#3, B3, B4, Bb4, B4, B#4, B4, B5, Bb5, B5, B#5, B5, B6.

Tuba Chromatic Scale

To be played from memory at a minimum tempo of ♩. = 76.

Two staves of musical notation for the Tuba Chromatic Scale. The first staff shows the ascending scale from B1 to B2, and the second staff shows the descending scale from B2 to B1. The key signature has one flat (Bb) and the time signature is 6/8. The notes are: B1, Bb1, B1, B#1, B1, B2, Bb2, B2, B#2, B2, B3, Bb3, B3, B#3, B3, B4, Bb4, B4, B#4, B4, B5, Bb5, B5, B#5, B5, B6.

Mallet Chromatic Scale

To be played from memory at a minimum tempo of ♩. = 112.

Two staves of musical notation for the Mallet Chromatic Scale. The first staff shows the ascending scale from B1 to B2, and the second staff shows the descending scale from B2 to B1. The key signature has one flat (Bb) and the time signature is 6/8. The notes are: B1, Bb1, B1, B#1, B1, B2, Bb2, B2, B#2, B2, B3, Bb3, B3, B#3, B3, B4, Bb4, B4, B#4, B4, B5, Bb5, B5, B#5, B5, B6.